

Accessory

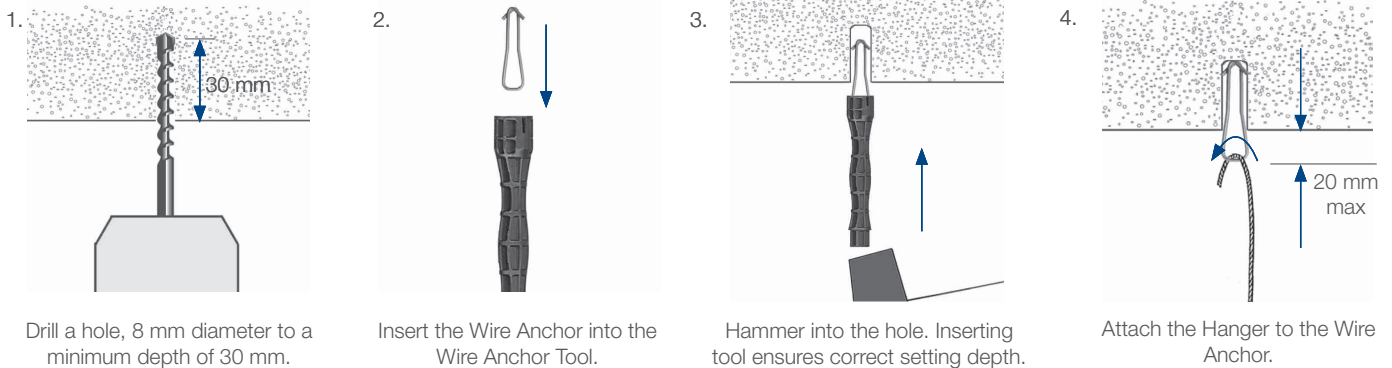
Made from high tensile stainless steel, the Wire Anchor is easily fixed into concrete for attaching No. 1 and No. 2 hangers.

FEATURES / BENEFITS

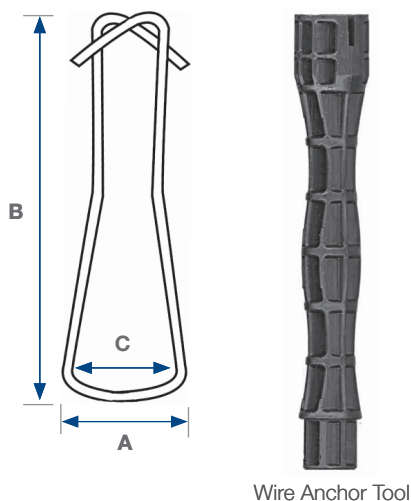
- Suitable for non-cracked concrete
- Stainless steel to suit most environments
- Winged ends bite into concrete to prevent pull out
- For easy installation, use the Wire Anchor Tool to hold the anchor in place whilst hammering into concrete
- Load rating is dependant on base material



INSTALLATION & MOUNTING CONCEPTS



SPECIFICATION



Wire Anchor Tool

Dimension	(mm)
A	13
B	50
C	9

SUBMITTAL INFORMATION

Safe Working Load:

Up to 45 kg

Material:

Stainless steel 302s26

WARNING: There are many different types of concrete which have different anchoring properties. Prior to installation, the installer must ensure that the concrete is suitable for use with this anchor.

IMPORTANT RECOMMENDATIONS

1. Construction materials and conditions vary on different sites. If it is suspected that the base material has insufficient strength to achieve a suitable fixing, contact Gripple Ltd. The responsibility for judgement of base material strength lies with the installer, and not with Gripple Ltd.
2. Not to be used in marine, coastal, swimming pool or corrosive environments.
3. The information and recommendations given herein are believed to be correct at time of writing. The data has been obtained from tests done under laboratory, or other controlled conditions and it is the user's responsibility to use the data given in light of conditions on site, taking account of the intended use of the products concerned.
4. Whilst Gripple Ltd can give general guidance and advice, the nature of Gripple products means that the ultimate responsibility for selecting the correct product for a particular application must lie with the customer.
5. All products must be used, handled and applied in accordance with current product instructions and manufacturers recommendations for use, published by Gripple Ltd.